

**FZD1 / Frizzled 1 Antibody (N-Terminus)**  
**Rabbit Polyclonal Antibody**  
**Catalog # ALS10668****Specification**

---

**FZD1 / Frizzled 1 Antibody (N-Terminus) - Product Information**

Application	IHC-P
Primary Accession	<a href="#">Q9UP38</a>
Reactivity	Human, Mouse, Rabbit, Hamster, Monkey, Horse, Bovine, Dog
Host	Rabbit
Clonality	Polyclonal
Calculated MW	71kDa KDa
Dilution	IHC-P~~N/A

**FZD1 / Frizzled 1 Antibody (N-Terminus) - Additional Information****Gene ID** 8321**Other Names**

Frizzled-1, Fz-1, hFz1, FzE1, FZD1

**Target/Specificity**

Human FZD1 / Frizzled 1. BLAST analysis of the peptide immunogen showed no homology with other human proteins.

**Reconstitution & Storage**

Long term: -70°C; Short term: +4°C

**Precautions**

FZD1 / Frizzled 1 Antibody (N-Terminus) is for research use only and not for use in diagnostic or therapeutic procedures.

**FZD1 / Frizzled 1 Antibody (N-Terminus) - Protein Information****Name** FZD1**Function**

Receptor for Wnt proteins (PubMed:<a href="http://www.uniprot.org/citations/10557084" target="\_blank">10557084</a>). Activated by WNT3A, WNT3, WNT1 and to a lesser extent WNT2, but apparently not by WNT4, WNT5A, WNT5B, WNT6, WNT7A or WNT7B (PubMed:<a href="http://www.uniprot.org/citations/10557084" target="\_blank">10557084</a>). Contradictory results showing activation by WNT7B have been described for mouse (By similarity). Functions in the canonical Wnt/beta-catenin signaling pathway (PubMed:<a href="http://www.uniprot.org/citations/10557084" target="\_blank">10557084</a>). The canonical Wnt/beta-catenin signaling pathway leads to the activation of disheveled proteins, inhibition of GSK-3 kinase, nuclear accumulation of beta-catenin and activation of Wnt target genes (PubMed:<a href="http://www.uniprot.org/citations/10557084" target="\_blank">10557084</a>).

target="\_blank">10557084</a>). A second signaling pathway involving PKC and calcium fluxes has been seen for some family members, but it is not yet clear if it represents a distinct pathway or if it can be integrated in the canonical pathway, as PKC seems to be required for Wnt-mediated inactivation of GSK-3 kinase. Both pathways seem to involve interactions with G-proteins. May be involved in transduction and intercellular transmission of polarity information during tissue morphogenesis and/or in differentiated tissues (Probable).

**Cellular Location**

Cell membrane; Multi-pass membrane protein

**Tissue Location**

Expressed in adult heart, placenta, lung, kidney, pancreas, prostate, and ovary and in fetal lung and kidney

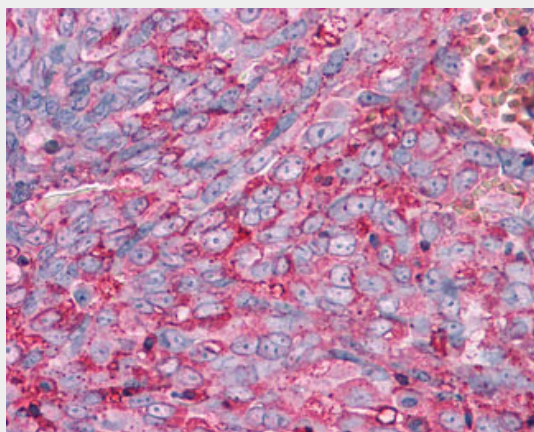
**Volume**

50 µl

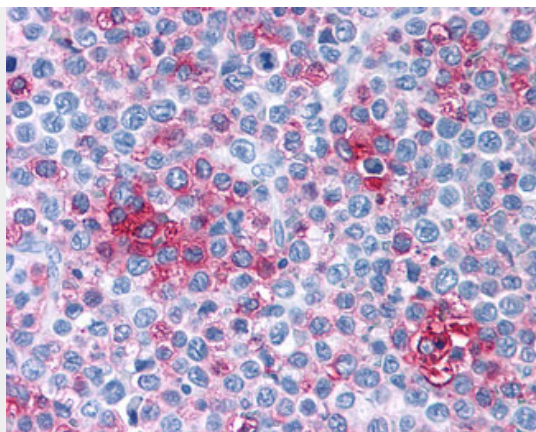
**FZD1 / Frizzled 1 Antibody (N-Terminus) - Protocols**

Provided below are standard protocols that you may find useful for product applications.

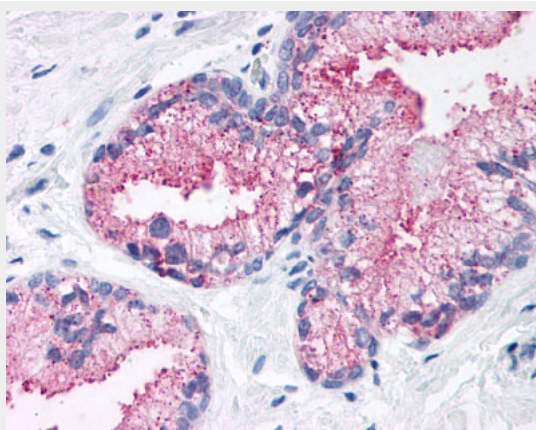
- [Western Blot](#)
- [Blocking Peptides](#)
- [Dot Blot](#)
- [Immunohistochemistry](#)
- [Immunofluorescence](#)
- [Immunoprecipitation](#)
- [Flow Cytometry](#)
- [Cell Culture](#)

**FZD1 / Frizzled 1 Antibody (N-Terminus) - Images**

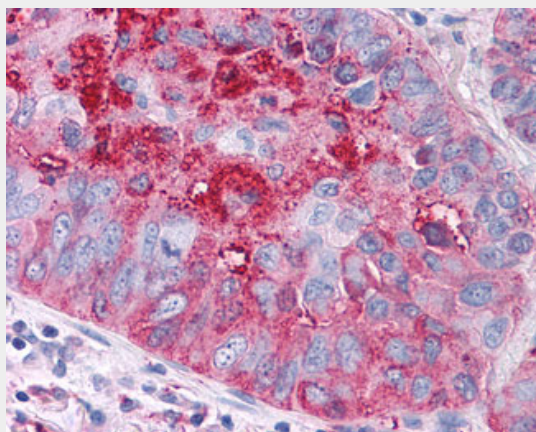
Anti-FZD1 / Frizzled 1 antibody IHC of human Ovary, Carcinoma.



Anti-FZD1 / Frizzled 1 antibody IHC of human Lymph Node, Non-Hodgkins Lymphoma.



Anti-FZD1 / Frizzled 1 antibody ALS10668 IHC of human prostate.



Anti-FZD1 / Frizzled 1 antibody IHC of human Lung, Non-Small Cell Carcinoma.

#### **FZD1 / Frizzled 1 Antibody (N-Terminus) - Background**

Receptor for Wnt proteins. Most of frizzled receptors are coupled to the beta-catenin canonical signaling pathway, which leads to the activation of disheveled proteins, inhibition of GSK- 3 kinase, nuclear accumulation of beta-catenin and activation of Wnt target genes. A second signaling pathway involving PKC and calcium fluxes has been seen for some family members, but it is not yet clear if it represents a distinct pathway or if it can be integrated in the canonical pathway, as PKC seems to be required for Wnt-mediated inactivation of GSK-3 kinase. Both pathways seem to involve interactions with G-proteins. May be involved in transduction and intercellular transmission of polarity information during tissue morphogenesis and/or in differentiated tissues. Activated by

Wnt3A, Wnt3, Wnt1 and to a lesser extent Wnt2, but not by Wnt4, Wnt5A, Wnt5B, Wnt6, Wnt7A or Wnt7B.

#### **FZD1 / Frizzled 1 Antibody (N-Terminus) - References**

Gazit A., et al. Oncogene 18:5959-5966(1999).

Sagara N., et al. Biochem. Biophys. Res. Commun. 252:117-122(1998).

Scherer S.W., et al. Science 300:767-772(2003).

Mural R.J., et al. Submitted (SEP-2005) to the EMBL/GenBank/DDBJ databases.

Hillier L.W., et al. Nature 424:157-164(2003).